



R

2018-

भाग-2

M.Sc. Internal

चौधरी चरण सिंह विश्वविद्यालय, मेरठ

Ch. Charan Singh University, Meerut

निम्नलिखित विवरण परीक्षार्थी द्वारा स्वयं भरा जाए (To be filled by the Examinee)

परीक्षा का नाम..... वर्ष 20..... भाग/सेमेस्टर.....
(Name of Exam) (Year 20.....) (Part / Semester)

विषय..... प्रश्न-पत्र/पाठ्यक्रम..... पेपर कोड नं.....
(Subject) (Paper /Course) (Paper Code No.)

परीक्षा का दिन..... दिनांक.....
(Day of Examination) (Date)

प्राप्तांक एवं पूर्णांक परीक्षकों द्वारा भरे जायें

पूर्णांक.....
(Max. Marks)

प्रश्नों की क्रम संख्या	a/I	b/II	c/III	d/IV	e/V	f/VI	g/VII	h/VIII	i/IX	j/X	योग
1											
2											
3											
4											
5											
6											
7											
8											
9											
10											
11											
12											
13											
14											

प्राप्तांक

(शब्दों में)

अंकों में

जाँचकर्ता के हस्ताक्षर एवं तिथि

परीक्षक के हस्ताक्षर एवं तिथि

2018-
चौधरी चरण सिंह विश्वविद्यालय, मेरठभाग-3
आवश्यक विवरणों से तृप्त भाग देंगे

R

Date Stamp to be affixed here

मार्गदर्शक

(परीक्षार्थी द्वारा भरा जाए)

परीक्षा का नाम..... भाग/सेमेस्टर.....

विषय.....

प्रश्न पत्र..... दिनांक.....

परीक्षार्थी का अनुक्रमांक (Roll Number)

उत्तर-पुस्तिका क्रमांक

KM-I-01-

M	A	0	0	0	0	0	0	0	0	0	0	0	0	0
B	1	1	1	1	1	1	1	1	1	1	1	1	1	1
C	2	2	2	2	2	2	2	2	2	2	2	2	2	2
D	3	3	3	3	3	3	3	3	3	3	3	3	3	3
E	4	4	4	4	4	4	4	4	4	4	4	4	4	4
F	5	5	5	5	5	5	5	5	5	5	5	5	5	5
G	6	6	6	6	6	6	6	6	6	6	6	6	6	6
H	7	7	7	7	7	7	7	7	7	7	7	7	7	7
I	8	8	8	8	8	8	8	8	8	8	8	8	8	8
J	9	9	9	9	9	9	9	9	9	9	9	9	9	9

(परीक्षार्थी की श्रेणी)

- संस्थागत
- व्यक्तिगत
- बैंक पेपर
- अंक सुधार
- भूतपूर्व
- एकल विषय

कालेज कोड

0	0	0	0
1	1	1	1
2	2	2	2
3	3	3	3
4	4	4	4
5	5	5	5
6	6	6	6
7	7	7	7
8	8	8	8
9	9	9	9

नामांकन संख्या (Enrollment Number)

पेपर कोड

M														
0	0	0	0	0	0	0	0	0	0	0	0	0	0	0
1	1	1	1	1	1	1	1	1	1	1	1	1	1	1
2	2	2	2	2	2	2	2	2	2	2	2	2	2	2
3	3	3	3	3	3	3	3	3	3	3	3	3	3	3
4	4	4	4	4	4	4	4	4	4	4	4	4	4	4
5	5	5	5	5	5	5	5	5	5	5	5	5	5	5
6	6	6	6	6	6	6	6	6	6	6	6	6	6	6
7	7	7	7	7	7	7	7	7	7	7	7	7	7	7
8	8	8	8	8	8	8	8	8	8	8	8	8	8	8
9	9	9	9	9	9	9	9	9	9	9	9	9	9	9

परीक्षार्थी का पूरा नाम

कक्ष निरीक्षक का नाम

SEC-C

Q19

- Summary:-
- thyroid gland
 - structure of thyroid
 - function of thyroid hormone.
 - Disease which occurred by thyroid hormone.
 - due to Hyposecretion
 - Hypersecretion

→

Thyroid gland is a largest gland.

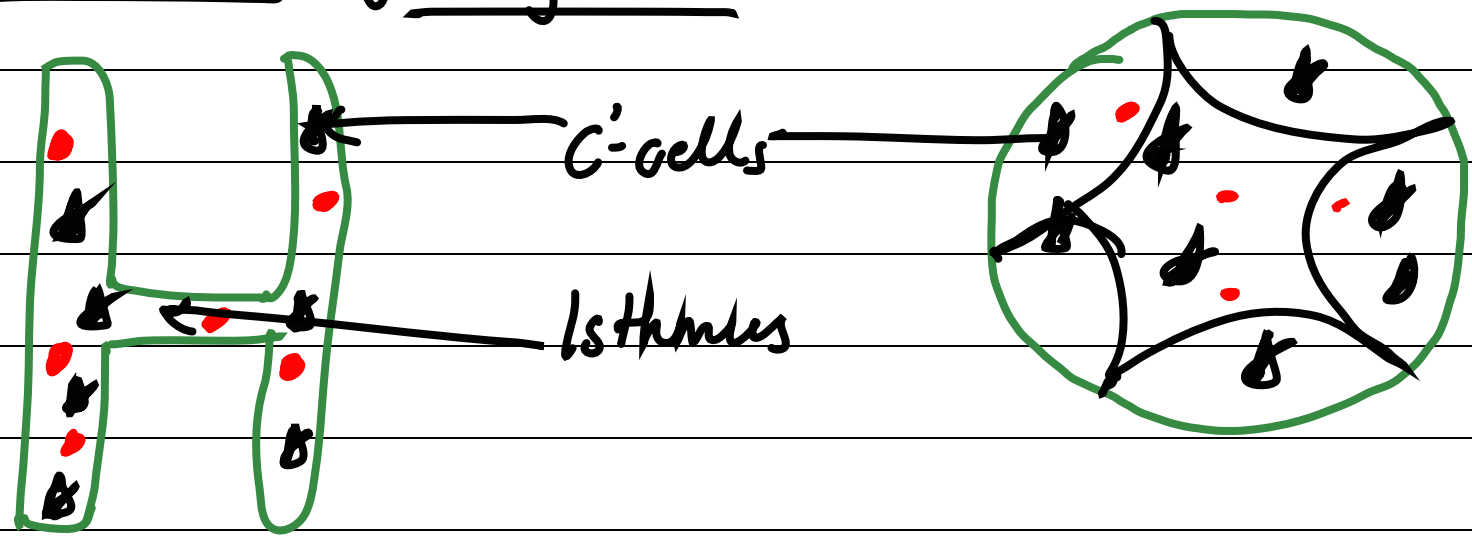
•

Slightly large in female. maximum size of thyroid gland at sexual maturity.

- Thyroid are in butterfly shape have wing called
 pyrnx.
- narrow connection between two lobe are
 called Isthmus.
- Thyroid gland controlled many function. in our
 body.
- Thyroxin hormone secrete from from thyroid
 gland.



Structure of thyroid



Functions of thyroid hormone

- thyroid performed many function in our body.

⇒ on Metabolic rate

• Metabolic rate :-

Increase the metabolic rate • Increase the O_2 consumption and Increase BMR (Basal metabolic rate) normal to 60-100% above.

- On Mitochondria :- Increase the no., size, and activity of mitochondria • Increase the ATP formation.

- on Protein :- Increase the protein formation in ribosomes.

- Enhance the formation of RNA from genes for formation the protein.

- On Carbohydrate :- Increase the absorption of carbohydrates
- Enhance the Glycogenesis and Glycolysis
- Increase enzyme activity -

On Skelton growth and development :-

- Growth and development :- Thyroxin is very essential for the growth of soft tissue and development.
- Increase the secretion of hormone to synthesized the protein hormone
- On Nervous system :- thyroid essential of fetus brain development
- On Respiration :-

- Increase metabolic rate Consumption of O_2 and formation of CO_2 .

- On sexual parts:- Thyroid hormone is important for normal sexual function. For Menstrual cycle Thyroxene is important.

Disorder due to hyposecretion of Thyroid Hormone:-

- Simple Goitre :- It takes place due to lack of Iodine in food. Skin is swelled or protrudes of neck region. It compresses the trachea and cause breathing problems.
- Cretinism :- Thyroid get functionless since birth

- These child called CRITIN • Physically mentally growth are arrested before adult.

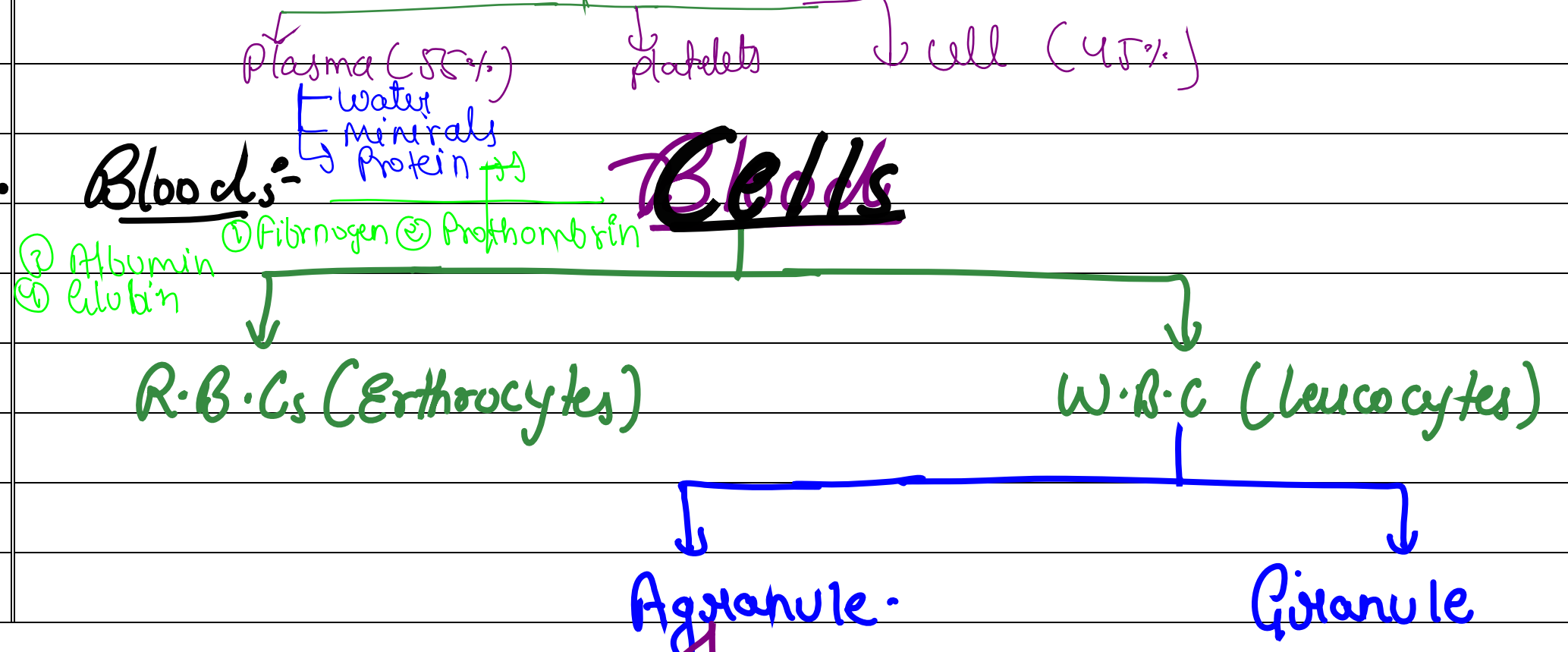
- Alexydena :- Thyroid become function less after adult. mucus decomposition in skin. body swelled up.

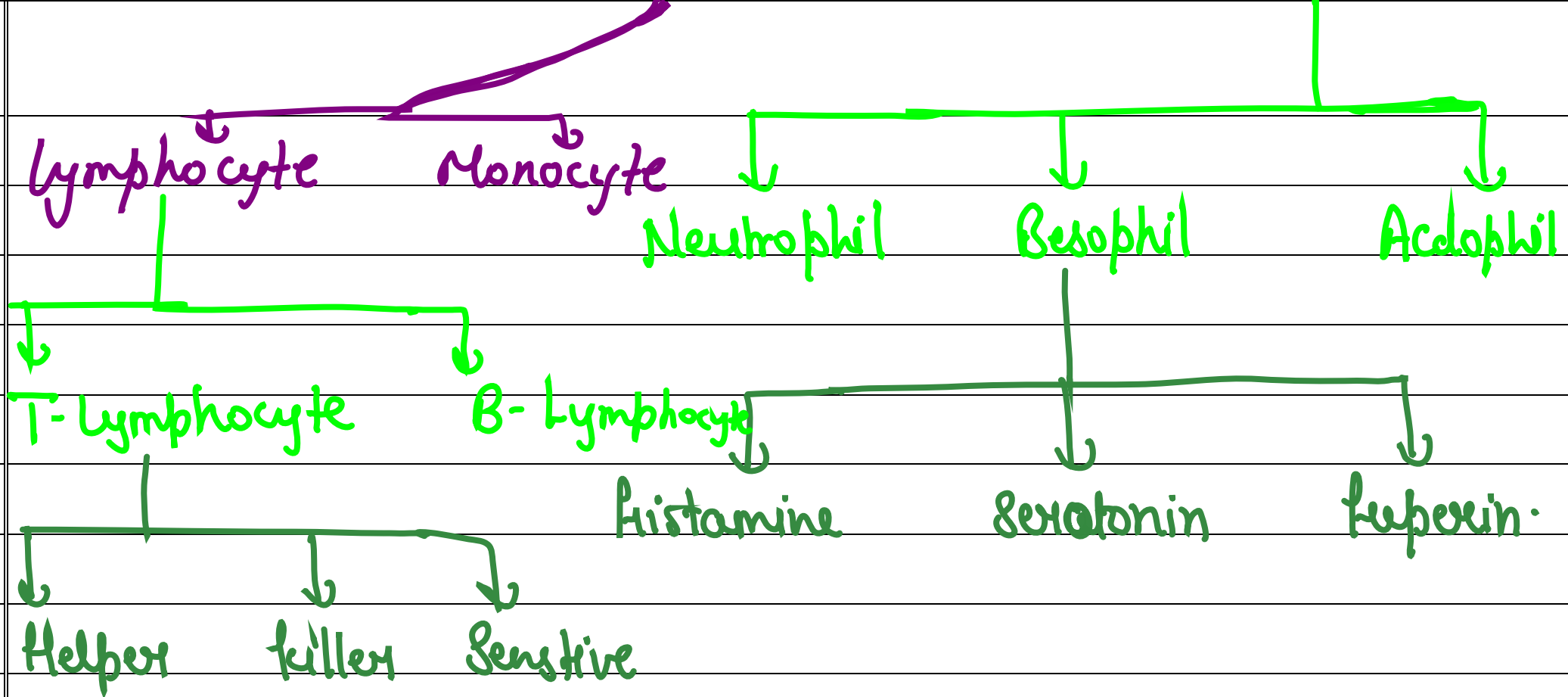
- Hashimoto disorder :- auto immune disorder. Antibody killed own antibodies which formed in own body.

10

- Summary :-
- Blood
 - Composition of blood
 - Defence system of body
 - Functions of blood.

Blood are formed by the composition of Plasma, Platelets cells-





R.B.Cs - R.B.Cs are ~~Red~~ ^{Red} blood corpuscles. does not contain nucleus.

W.B.C - W.B.C are white blood cells they have nucleus.

Vasodilator: dilates the blood vessels from the site of infection.

Vasoconstrictor:- Normalise the blood vessels.

- all the T-lymphocyte are formed 14-15 age.

Functions of Blood

Defence system of body.

- Body have three defence layers

①

Skin

②

Blood

③

Antibody.

①

Skin:- By sweat body / skin killed the germs by plasmolysis.

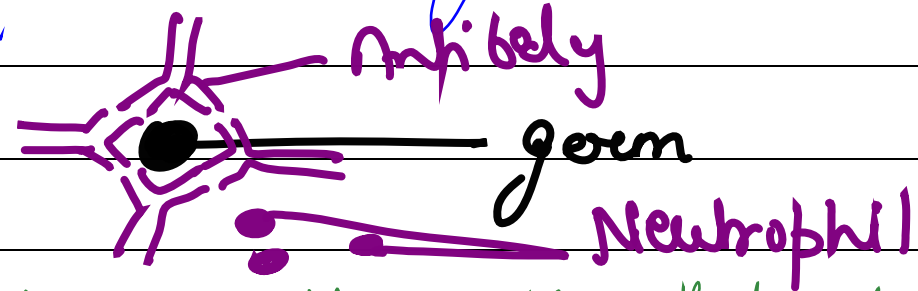
②

Blood:- when germs reached into the blood Phagocytes are present there. so, they come and eat

or killed the germs.



① Antibody:- Antibody captured the germ and antibody killed that.



⇒ when germ reached into the cell that time sensitive cell identified the infected cells and phagocyte killed them. and germ come into the blood. than antibody captured the germ. • germ can't move, can't reproduce than Neutrophil / Phagocytes easily eat the germ.

• Antibody produced against foreign Antigen. for protect our body.

- O_2 is move / reached in every organ with the help of hemoglobin. Blood provide O_2 for all body cell.
- That's a major component of our body.

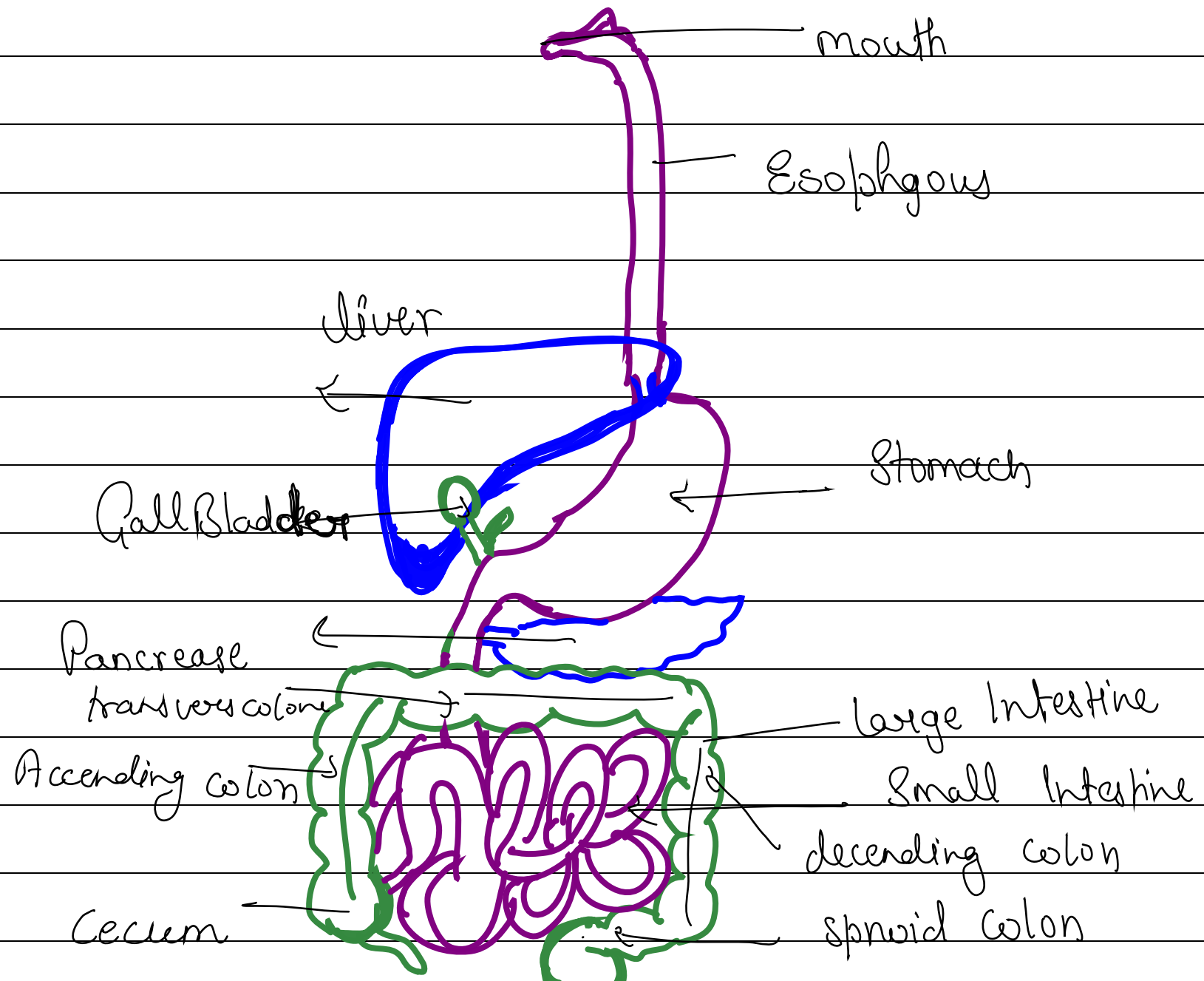
SEC-B

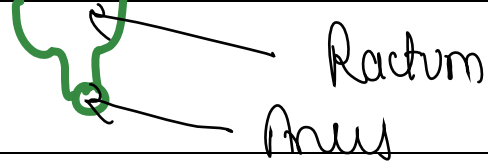
6
⇒

Structure of Heart of Birds

Digestive system

7





The process of digestive system deconstructing the food into small molecules that can be absorbed inside the body.

- Major two part performed digestion

Major organs.	Accessory organ
① Mouth	① liver
② Esophagus	② Gall bladder
③ Stomach	③ Pancreas
④ Small Intestine	
⑤ Large Intestine	

Sec - A

- ① Pineal gland :- Pineal gland attached to the Epithelamine - located / present just opposite to Pituitary gland.
- also know as third eye.
 - This sensitive to light - so, blind peoples get early sexual maturity.

② Protein hormone

- ① Relaxin :- Relaxin secreted from Corpus Luteum it relaxes uterine wall and help in detachment of placenta -

② T.S.H \rightarrow T.S.H (Thyroid stimulated hormone)
 it stimulates thyroid gland to secrete
 thyroxin.
 thyroid gland also known as kump of
 life.

③ Menstrual cycle

This occurred in primates
 female alternate ova released
 from the ovary. One
 time from left other
 time from Right.

Estrous cycle.

Occurred in animal
 females.

