



R

2018-

भाग-2

M.Sc. Internal

चौधरी चरण सिंह विश्वविद्यालय, मेरठ
Ch. Charan Singh University, Meerut

निम्नलिखित विवरण परीक्षार्थी द्वारा स्वयं भरा जाए (To be filled by the Examinee)

परीक्षा का नाम M.Sc वर्ष 20 19-20 भाग/सेमेस्टर II 6/5/19
(Name of Exam) (Year 20.....) (Part / Semester)
विषय Zoology प्रश्न-पत्र/पाठ्यक्रम Biochemistry प्रश्न कोड नं (H-2065)
(Subject) (Paper /Course) (Paper Code No.)
परीक्षा का दिन Monday दिनांक 6-May
(Day of Examination) (Date)

प्राप्तांक एवं पूर्णांक परीक्षकों द्वारा भरे जायें

पूर्णांक (Max. Marks)

प्रश्नों की क्रम संख्या	a/I	b/II	c/III	d/IV	e/V	f/VI	g/VII	h/VIII	i/IX	j/X	मार्क
1	1/2	1	1	1/2							3
2	1/2										2
3	3/2	2									5
4											
5											
6											
7											
8											
9											
10											
11											
12											
13											
14											

प्राप्तांक

(शब्दों में)	अंकों में
--------------	-----------



2018- चौधरी चरण सिंह विश्वविद्यालय, मेरठ

R

Date Stamp to be affixed here

मार्ग-3

(परीक्षार्थी द्वारा भरा जाए)

परीक्षा का नाम M.Sc भाग/सेमेस्टर II
विषय Zoology
प्रश्न पत्र Biochemistry दिनांक 6 May

परीक्षार्थी का अनुक्रमांक (Roll Number)

उत्तर-पुस्तिका क्रमांक

M	A	0	0	0	0	0	0	0	0	0	0	0	0	0	0	0	0	0	0
B	1	1	1	1	1	1	1	1	1	1	1	1	1	1	1	1	1	1	1
C	2	2	2	2	2	2	2	2	2	2	2	2	2	2	2	2	2	2	2
D	3	3	3	3	3	3	3	3	3	3	3	3	3	3	3	3	3	3	3
E	4	4	4	4	4	4	4	4	4	4	4	4	4	4	4	4	4	4	4
F	5	5	5	5	5	5	5	5	5	5	5	5	5	5	5	5	5	5	5
G	6	6	6	6	6	6	6	6	6	6	6	6	6	6	6	6	6	6	6
H	7	7	7	7	7	7	7	7	7	7	7	7	7	7	7	7	7	7	7
I	8	8	8	8	8	8	8	8	8	8	8	8	8	8	8	8	8	8	8
J	9	9	9	9	9	9	9	9	9	9	9	9	9	9	9	9	9	9	9
K																			
L																			
P																			
S																			
T																			
U																			
V																			
W																			

KM-I-01-

कालेज कोड

018

(परीक्षार्थी की श्रेणी)

- संस्थागत
- व्यक्तिगत
- बैक पेपर
- अंक सुधार
- भूतपूर्व
- एकल विषय

नामांकन संख्या (Enrollment Number)

M	1	4	0	8	5	7	4	9											
0	0	0	0	0	0	0	0	0	0	0	0	0	0	0	0	0	0	0	0
1	1	1	1	1	1	1	1	1	1	1	1	1	1	1	1	1	1	1	1
2	2	2	2	2	2	2	2	2	2	2	2	2	2	2	2	2	2	2	2
3	3	3	3	3	3	3	3	3	3	3	3	3	3	3	3	3	3	3	3
4	4	4	4	4	4	4	4	4	4	4	4	4	4	4	4	4	4	4	4
5	5	5	5	5	5	5	5	5	5	5	5	5	5	5	5	5	5	5	5
6	6	6	6	6	6	6	6	6	6	6	6	6	6	6	6	6	6	6	6
7	7	7	7	7	7	7	7	7	7	7	7	7	7	7	7	7	7	7	7
8	8	8	8	8	8	8	8	8	8	8	8	8	8	8	8	8	8	8	8
9	9	9	9	9	9	9	9	9	9	9	9	9	9	9	9	9	9	9	9

पेपर कोड

H-2065

परीक्षार्थी का पूरा नाम

NIKITA SHARMA

कक्ष निरीक्षक का नाम

Ajmer

Sec-A

Very short Answer Questions

Q-1 Difference between Purine and Pyrimidine

Ans

Purine

Pyrimidine

① Purine part of DNA *also RNA*

Pyrimidine part of DNA & RNA found in pyrimidine. ①

② Purine are two type

Pyrimidine are three type

(1) Adenine ✓

(1) Cytosine ✓

(2) Thymine ✓ *(DNA)*

(2) Guanine ✓

(3) Uracil (RNA) ✓

(3) Triple bond present in pyrimine.

(3) Double bond present in Pyrimidine.

(2) Difference between cDNA and CDNA

cDNA	CDNA
<p>(1) cDNA full form Complementary DNA ⁽¹⁾</p>	<p>(1) CDNA - This is ^{name} part of DNA structure. _{type}</p>

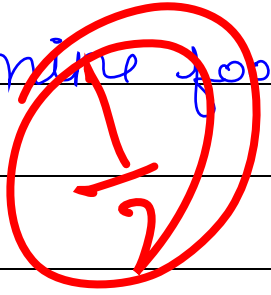
3. Difference between vitamins and enzyme.

Vitamins	enzyme
(1) vitamins are essential	(1) enzyme are essential

for our body.

for our body

2. We get vitamin^{like} food



enzyme already found

in our body.

Q-4 Difference between

co-factor and enzyme

Co-factor

enzyme

(1-) Co factor are protein

(1-) enzyme made up of amino

Co-factor are two type-

acid. We already found in

(1-) Inorganic co-factor

our body. Discovered by

(2) Organic co-factor

Buchner.

Sec - C

10. Mechanism of Glycolysis

//

Ans

Glucose

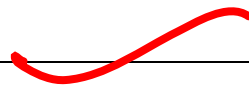
2 ATP



Hexokinase

2 ADP

Glucose - 6 - Phosphate



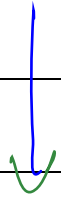
Glucose isomerase

Fructose - 6 - Phosphate



fructose isomerase

fructose - 1 - 6 Bisphosphate



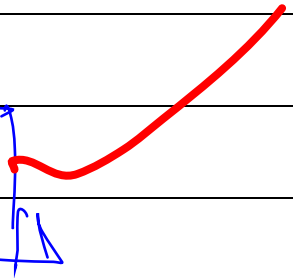
GAPH

DAPH



GAPH Hydrolysis

1, 3 biophosphate Glycerate



biophosphate Glycerate

3 phosphate Glycerate



Phosphate Glycerate

2 ADP

2 ATP

3



2 Phosphate Glycerate

Organic substance
Calculation
product
misses



Endo niurate

Endo l pyruvate



2 ADP

2 ATP

Pyruvate

Sec - C

7

Ques Conformation of protein

Ans Protein - Protein are very essential for our ^{body} ~~protein~~. We get protein food.

Some source of protein - Egg, Dal etc.

Types of protein & structure

1. Primary structure ✓

(2.) Secondary structure ✓

(3.) Tertiary structure ✓

(4.) Quaternary structure ✓

Name of the protein

① Albumin

② Leucine

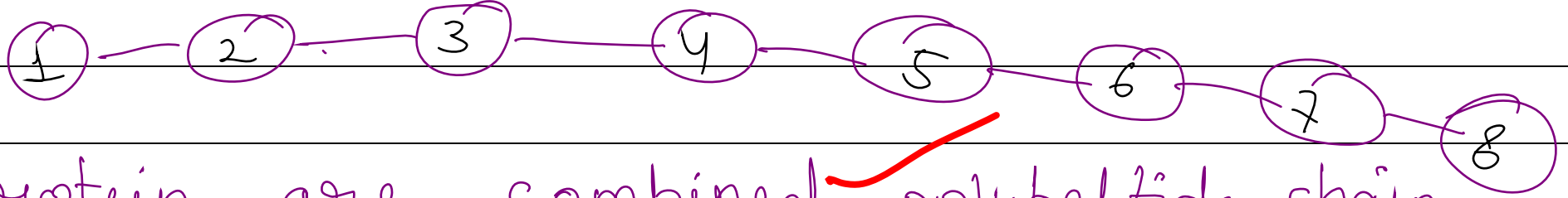
③ Globulin

④

Fibrinogen

⑤

Velenin



Protein are combined polypeptide chain.

②

Sec-β

Short Answer Questions

7. What is pH and its role in digestion

Ans

pH

pH is negative

$$pH = -[H] \log$$

Acid base balance

If pH $[H^+]$ and concentration $[OH^-]$

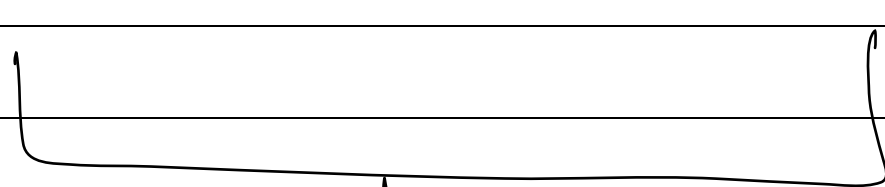
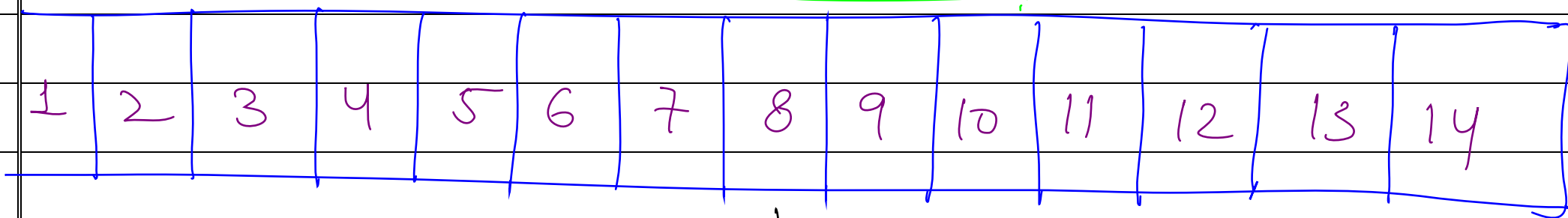
Then Acidic.

If $\text{pH} < 7$ and concentration $[\text{H}^+]$

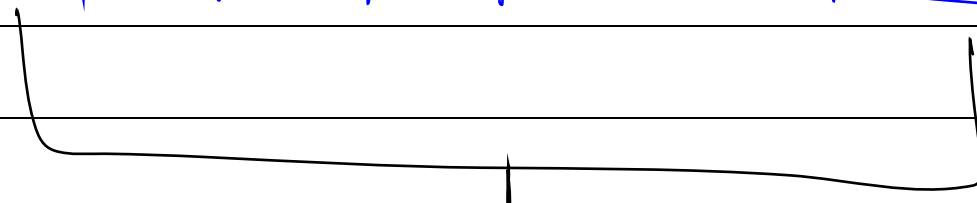
Then Basic.

7 is neutral < Acidic < basic

Scale of pH



Acidic



basic

Strong

Weak

Weak

Strong

Ist digestion over Mouth by saliva

pH = 1.5 to 3.5

?

IInd digestion over stomach

IIIrd digestion over small intestine

